



CENTER FOR BIOETHICS AND
SOCIAL SCIENCES IN MEDICINE

FALL 2015

Greetings from the Co-Directors

It is with both sadness and joy that we announce that CBSSM Co-Director Dr. Angie Fagerlin will be assuming a new position as the inaugural Chair of Population Health Sciences at the University of Utah. While we are very sad to see Angie leave, we congratulate her on this well-deserved opportunity and are thrilled to see her enter this new stage in her career.

Dr. Fagerlin has been with the University of Michigan for 15 years and Co-Director of CBSSM for the last 5 years. She has been an integral member of CBSSM and all its precursors—the Program for Improving Health Care Decisions and The Center for Behavioral and Decision Sciences in Medicine. Dr. Fagerlin will be greatly missed for her friendship, collegiality, mentorship, and the great science she has produced over the years.

As of January 2016, current Co-Director of CBSSM Dr. Raymond De Vries will be joined by Dr. Brian Zikmund-Fisher, who will serve as an Interim Co-Director. Dr. Zikmund-Fisher is an Associate Professor of Health Behavior and Health Education at the School of Public Health, as well as a Research Associate Pro-

fessor of Internal Medicine. He has been actively involved with CBSSM and its precursors for over 13 years and has many research collaborations and mentoring relationships with CBSSM faculty, fellows, and affiliates. Dr. Zikmund-Fisher looks forward to helping to grow CBSSM's many research and educational initiatives in the future.

In this newsletter, we spotlight Julie Wright Nunes, MD, MPH and her work related to Chronic Kidney Disease (CKD) patient education (page 2). Current post-doctoral fellows Kayte Spector-Bagdady, JD, MBioethics and Jacob Solomon, PhD (pg 3) contribute to ongoing CBSSM research projects and are establishing their own research agendas.

CBSSM faculty are key contributors to the growth of the Medical Ethics Path of Excellence (page 4) and CBSSM co-sponsors various events, such as the Bishop Lecture in Bioethics, the CBSSM Research Colloquium, our bimonthly Seminar series, as well as special events like our recent screening of the film, "Still Alice" (page 5-6).

Angela Fagerlin, PhD
Co-Director

Raymond De Vries, PhD
Co-Director

Valerie Kahn, MPH
Manager

Kerry Ryan, MA
Public Relations and Events

In this issue:

Research Spotlight:	
Julie Wright Nunes	2
New Post-Doc Fellows	3
Path of Excellence:	
Medical Ethics	4
CBSSM Events	5-6
Faculty Highlights	7-8
Faculty Presentations	8
Faculty Publications	9-10
CBSSM Happenings	
& Staff News	11-12

CBSSM
2800 Plymouth Rd
Building 16, 430W
Ann Arbor, MI 48109-2800
734.615.8377
<http://cbssm.med.umich.edu/>

CBSSM is supported by the Dean's Office at the University of Michigan Medical School, the Department of Internal Medicine, and the Ann Arbor Veterans Administration Medical Center (Center for Clinical Management Research).

Research Spotlight: Julie Wright Nunes, MD, MPH

Julie Wright Nunes, MD, MPH is an Assistant Professor at the UM Department of Internal Medicine. Her research interests include Chronic Kidney Disease (CKD) and its prevention and also the development of methods and tools to facilitate and optimize patient kidney disease education.

Dr. Wright's past work includes developing and validating a survey to measure objective and perceived knowledge in patients about their CKD diagnosis and its management. This survey found that significant knowledge deficits exist among patients with CKD, even in those patients under established nephrology care for years. Dr. Wright also co-developed a one-page educational worksheet for providers to use during patient clinic visits. This brief intervention which took only a couple minutes to review in clinic, significantly increased patient CKD diagnostic knowledge.

Next phases of Dr. Wright's research (supported by an NIH K23 5 year grant) include eliciting patient and provider perspectives on how to improve patient-provider CKD education and how to better optimize patient self-management needed to preserve kidney health. The early phases of the study are completed, with initial findings that emphasize a need for more educational interventions for patients during their initial diagnosis of CKD. In the final phases of the study, Dr. Wright and colleagues will develop and test an educational tool that primary care doctors can use in clinics to talk to patients about CKD. They will examine feasibility and impact on patient focused measures.

Preliminary results from the early phases of this research show that patients WANT to know and understand their CKD diagnosis early, while physicians are not united on optimal methods for providing diagnostic information within the spectrum of disease.

Dr. Wright's research has been highlighted in the New York Times, as well as in articles and conferences through the American Society of Nephrology, the National Kidney Foundation, and various news outlets focusing on Nephrology. Most recently, one of Dr. Wright's studies highlighting limited patient knowledge about important dietary goals for limiting sodium was featured in the Nephrology Times (July/August 2015).

Dr. Wright is also an advisor-consultant for the American Kidney Fund and a member of the NIH NIDDK National Kidney Disease Education Coordinating Panel.



Julie Wright Nunes, MD, MPH

Publication highlights:

Wright Nunes JA, Anderson CAM, Greene JH, Ikizler TA, Cavanaugh FL. Results of a novel screening tool measuring dietary sodium knowledge in patients with chronic kidney disease. BMC Nephrology. 2015;16:42.

Wright Nunes J, Greene JH, Wallston K, et al. Pilot study of a physician-delivered education tool to increase patient knowledge about CKD. Am J Kidney Dis. 2013;62:23-32.

Wright JA, Wallston KA, Elasy TA, Ikizler TA, Cavanaugh KL. Development and results of a kidney disease knowledge survey given to patients with CKD. Am J Kidney Dis. 2011;57:387-395.

Wright Nunes JA, Wallston KA, Eden SK, Shintani AK, Ikizler TA, Cavanaugh KL. Association Among Perceived and Objective Disease Knowledge and Satisfaction with Physician Communication in Patients with Chronic Kidney Disease. Kidney Int. 2011;80:1344-51.

New Postdoctoral Research Fellows

Kayte Spector-Bagdady, JD, MBioethics



Kayte Spector-Bagdady came to CBSSM to develop her research on the impact of laws, institutional policies, and ethics on equitable access to healthcare and to learn from the many accomplished faculty at U of M. She is particularly interested in the areas of reproductive justice, genetic testing,

drug and device regulation, and research ethics. She joined CBSSM from the Presidential Commission for the Study of Bioethical Issues where she was Associate Director. At the Commission, she supervised staff work on the ethics of the U.S. response to the Ebola

epidemic, returning incidental findings, and the ethical implications of whole genome sequencing. She also acted as a lead staff investigator and author for the report "Ethically Impossible": STD Research in Guatemala from 1946 to 1948 on the unethical intentional infection research conducted by the U.S. Public Health Service. Kayte began as an attorney advising drug and device companies on FDA compliance and received her J.D. and M.Bioethics from the University of Pennsylvania Law School and School of Medicine respectively after graduating from Middlebury College. She enjoys good food, film, and friends, as well as spending lots of quality time with her three year old, new baby, and die hard Michigan fan husband.

Jacob Solomon, PhD

Jacob Solomon completed a PhD in Media and Information Studies at Michigan State University in 2015. His research is focused on Human-Computer Interaction and Human Factors Engineering where he studies how the design of interactive systems affects users' behavior. His research merges methods from social sciences with computer and information science to design, build, and evaluate socio-technical systems.

His work looks at how the design of interfaces between people and algorithms, artificial intelligence, or similarly complex computational technologies affects decision making. He studies how users' beliefs about how these technologies work influence their willingness to follow the recommendations they make or use the information they provide in their decision making. His mentor at CBSSM is Dr. Brian Zikmund-Fisher. They are

working to develop an application to provide user-centered presentations of clinical test data available to patients over the web. He is also working on designing and building other decision aids in collaboration with researchers at CBSSM and studying how the design of these aids impacts decision making. He and his wife have two boys, a two-year old and a four-month old. In his spare time he loves to play sports, ski, and travel with his family.



Medical Ethics Path of Excellence

The Ethics Path of Excellence admitted their second medical school class in March, 2015. Twelve students joined the Path. In addition to the students, we have new faculty advisors including Ed Goldman, Kathryn Moseley, Janice Firn, and Sacha Montas. Andrew Shuman also joined the core faculty. Several evening sessions have been held including one on ethics consultation (led by Andy Shuman), one on pediatric ethics (Christian Vercler and Kathryn Moseley), and one on ethics computer searches (led by Carol Shannon, our information specialist).

This year, the Path of Excellence was responsible for administering the core ethics curriculum for all of the M1 students. Two discussion sessions were held with interdisciplinary faculty volunteers including Ed Goldman (CBSSM), Eric Adelman (Neurology), Albert Quiery (Hematology/Oncology), Kayte Spector-Bagdady (CBSSM), Janice Firn (Social Work), Susan Goold (CBSSM), Wendy Uhlmann (Medical Genetics), Andy Shuman (CBSSM), Christian Vercler (CBSSM), Charles Boyer (Nephrology), Andy Barnosky (Emergency Medicine), Denege Ward (Internal Medicine), and Naomi Laventhal (CBSSM).

Students continue to complete capstone projects. Yael Shinar was part of a panel workshop on web-based clinical ethics consultation that included Andy Shuman and Lauren Smith at the 11th Annual International Conference on Clinical Ethics Consultation at Mt. Sinai Medical Center in New York City. Yael was also the medical student speaker at the recent Michigan State Medical Society Annual Bioethics Conference on pediatric/neonatal ethics in Ann Arbor on November 14.

The Ethics Path of Excellence will continue to be a co-curricular activity until 2017 when it will be required for all students. If you are interested in advising students or mentoring them on research projects, please contact Lauren Smith, Director of the Path of Excellence.

PIHCD Working Group

The PIHCD Working Group provides a forum for project-focused interdisciplinary collaborations in topics related to bioethics, health communication, decision making and other topics that fit within the 5 domains of CBSSM.

PIHCD meetings provide an opportunity for investigators to receive feedback on research proposals, paper drafts, grant applications, or projects at any stage of development.

PIHCD usually meets on Wednesday or Thursdays at 2 or 3 pm in B004E.

To be added to the PIHCD email list, contact Nicole Exe at nexe@umich.edu OR join the email list through the CBSSM website:

<http://cbssm.med.umich.edu>

Bioethics Grand Rounds

CBSSM co-sponsors Bioethics Grand Rounds. Bioethics Grand Rounds is a monthly presentation and discussion of medical ethics.

The Bioethics Grand Rounds is sponsored by the UMHS Adult and Pediatric Medical Ethics Committee and the Program of Society and Medicine. This educational session is open to all faculty and staff and members of the public.

The next Bioethics Grand Rounds will be Wednesday, December 16 at Noon in Ford Auditorium. The speaker will be **Robert Fastiggi, AB, MA, PhD**, Professor of Systemic Theology, School of Theology, Sacred Heart Major Seminary.

Upcoming CBSSM Events 2016

2016 Research Colloquium & Bishop Lecture

The CBSSM Research Colloquium will be held **Wednesday, April 27, 2016** at the Founders Room, Alumni Center, 200 Fletcher St., Ann Arbor, MI. The Colloquium will feature the Bishop Lecture in Bioethics as the keynote address. **William Dale, MD, PhD** will present the Bishop Lecture.

William Dale, MD, PhD is Associate Professor of Medicine and Chief, Section of Geriatrics & Palliative Medicine & Director, SOCARE Clinic at the University of Chicago. A geriatrician with a doctorate in health policy and extensive experience in oncology, Dr. Dale has devoted his career to the care of older adults with cancer -- particularly prostate cancer. Dr. Dale has a special interest in the identification and treatment of vulnerable older patients who have complex medical conditions, including cancer. He is actively researching the interactions of cancer therapies with changes associated with aging.



The Bishop Lecture will be jointly presented by CBSSM and the Bishop Lectureship in Bioethics fund.

Abstract submissions for the CBSSM Research Colloquium are welcome from all disciplines. Abstracts should be submitted on the Abstract Submission form. To receive this form or to submit an abstract via email contact: Kerry Ryan, kryanz@med.umich.edu. Deadline for abstract submission is **Friday, April 16, 2016**.

2015-2016 Seminar Series

Twice-monthly seminars are sponsored by CBSSM on a variety of topics. Seminars are generally scheduled on Wednesdays or Thursdays, at 3:00-4:00 pm located in 266C, NCRC Building 16, unless otherwise noted.

See <http://cbssm.med.umich.edu/news-events/events/cbssm-seminars> for updates. You can be added to the CBSSM seminar list from the CBSSM website home page.

Remaining 2015-2016 seminar dates:

December 9	Kayte Spector-Bagdady, PhD, MBioethics
January 20	Darin Zahuranec, MD
February 3	Aaron Scherer, PhD
February 25	Christian Vercler, MD
March 9	Jason Rose, PhD
March 30	Jeffrey Bishop, MD, PhD
April 14	Lisa Schwartz, MD, MS & Steven Woloshin, MD, MS
May 5	Anna Kirkland, JD, PhD
May 18	Reshma Jagsi, MD, PhD

2015 CBSSM Past Event Highlights

Kevin Volpp, MD, PhD Talk

April 16, 2015

Kevin Volpp, MD, PhD, Staff Physician, CHERP, Philadelphia VA Medical Center; Director, Center for Health Incentives and Behavioral Economics, Leonard Davis Institute; Vice Chairman for Health Policy, Medical Ethics and Health Policy; Co-Director, Penn Med Center for Health Care Innovation; Professor, Perelman School of Medicine and the Wharton School, University of Pennsylvania presented the talk, "Improving Patient Health Behavior and Provider Performance via Insights from Behavioral Economics."



Wendy Kline, PhD Talk

September 24, 2015

Wendy Kline, PhD, Dema G. Seelye Chair in the History of Medicine, Purdue University presented the talk, "How Midwives Learn: Origins of the Home Birth Controversy." This presentation focused on the first accredited program for non-nurse midwives in the U.S., the Seattle Midwifery School.



Kirsten McCaffery, BSc (Hons), PhD Talk

November 5, 2015

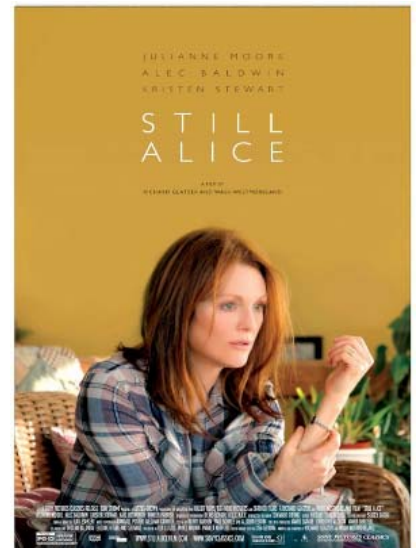
Kirsten McCaffery, BSc (Hons), PhD; Professorial Research Fellow, School of Public Health; Sydney Medical School; NHMRC Career Development Fellow; Deputy Director, Public Health Section, Centre for Medical Psychology and Evidence based Decision Making (CeMPED) presented the talk,



"Communicating overdiagnosis in breast cancer screening: a randomised trial of a decision aid among women approaching target screening age."

October 15, 2015

CBSSM and the Michigan Alzheimer's Disease Center (MADC) co-sponsored a film screening of the film "Still Alice," which was followed by a discussion moderated by Co-Director, **Raymond De Vries, PHD** and included panelists, **Nancy Barbas, MD, MSW**, Associate Professor of Neurology and **J. Scott Roberts, PhD**, Associate Professor of Health Behavior & Health Education.



Free Film Screening; "Still Alice"

Selected CBSSM Faculty Highlights

CBSSM welcomes faculty involvement across the University. Faculty affiliated with CBSSM come not only from the Medical School but also from the School of Public Health, the School of Public Policy, the Law School, the College of Literature, Science and the Arts, and the Institute for Social Research.

Geoff Barnes was a Young Investigator Award Finalist at the 64th Annual Scientific Session of the American College of Cardiology.

Jeff Kullgren served as panelist at Crain's Health Care Leadership Summit in Detroit discussing the need for health care price and quality transparency.

Tanner Caverly and **Jeremy Sussman** were quoted in the New York Times for their JAMA Internal Medicine articles related to Diabetes de-intensification.

Kayte Spector-Bagdady presented the keynote address at the 2015 International Association of Clinical Research Nurses (IACRN) 7th Annual Conference.

Christian Vercler was appointed Co-Chair of the American Council of Academic Plastic Surgeons Ethics & Professionalism Education Committee.

Reshma Jagsi's Journal of Oncology article, "Oncologists' Experiences and Attitudes About Their Role in Philanthropy and Soliciting Donations From Grateful Patients" was featured in the New York Times.

Angie Fagerlin co-authored a JAMA Viewpoint article titled "Rethinking Patient-Physician Communication of Biopsy Results -- The Waiting Game."

Jeffrey Kullgren wrote a piece, "How to Teach People About Healthcare Pricing" for the Measuring Costs and Outcomes in Health Care, a six-week online forum co-sponsored by the Harvard Business Review and the New England Journal of Medicine.

Raymond De Vries presented at the Presidential Commission for the Study of Bioethical Issues on how to insure that the public has a voice in creating bioethics policies.

Sarah Hawley was quoted in "Hour Detroit" discussing BRCA1 and BRCA2 mutations and the subsequent odds of developing breast cancer later in life.

Brian Zikmund-Fisher was quoted regarding the relaunch of 23andme by several news outlets, including an interview for the LA Times article, "Genetic testing evolves, along with health and ethics debates."

Jeff Kullgren was awarded a MICHR pilot grant for "Translating insights from behavioral economics and self-determination theory to promote sustained weight loss among obese employees."

Raymond De Vries is quoted in a Dutch national newspaper, Volkskrant, regarding a recent AMC Netherlands and University of Amsterdam study comparing infant mortality in mid-wife led versus obstetrician-led care in the Netherlands.

Angie Fagerlin and Sarah Hawley were promoted to Professor of Internal Medicine.

Sarah Hawley was quoted by HealthDay about the exciting preliminary results of a recent breast cancer vaccine trial.

Christian Vercler published a piece, "Surgical Virtue and More" in Narrative Inquiry in Bioethics, a journal exploring current issues in bioethics through personal stories, qualitative and mixed-methods research articles, & case studies.

Ken Langa was featured in a Detroit Free Press article regarding the current lack of research evidence for brain games benefitting cognition.

Kathryn Moseley and Uchenna Ezeibe's poster, "Pediatric Ethics Consultation Service at a Tertiary Hospital: A Retrospective Review" was chosen as the recipient of the Best Poster Award at the 11th Annual International Conference on Clinical Ethics & Consultation.

(Continued on page 8)

Selected Faculty Highlights (continued)

Raymond De Vries co-authored commentary with 159 key signatories calling for the Minnesota Legislature to hold hearings on psychiatric research misconduct by the University of Minnesota.

Susan Goold co-authored Health Affairs Blog "Helping Doctors Choose Wisely: Three Innovative Principles For Health Care Organizations"

Reshma Jagsi was interviewed by MedicalResearch.com, discussing her study which found that many breast cancer patients have an unmet need to discuss genetic testing with their healthcare provider.

Tanner Caverly, with the support of the Lown Institute, created the Do No Harm Project Competition that asks clinical medical trainees to write vignettes chronicling harm or near harm caused by medical overuse. They announced the inaugural winners in January 2015.

Kathryn Moseley received the Pediatric Health Disparities Award from the UM Department of Pediatrics for her project titled "Understand Disparities in Ethics Consultation."

Brian Zikmund-Fisher received the 2015 Henry Russel Award for exceptional scholarship and teaching.

Selected Recent CBSSM Faculty Presentations

CBSSM investigators were well represented at the 17th Annual Meeting of the American Society of Bioethics and Humanities (ASBH) in Houston, TX October 22-25, 2015. A few highlights:

De Vries RG, Kim SYH, Kim HM, Krenz C, Lehpamer N, Ryan K, Tomlinson T. How and Why Moral Concerns Reduce Willingness to Donate to a Biobank: A Mandate to Improve the Biobank Consent Process.

Laventhal NT, Janvier A, Verhagen E. Outsourcing End-of-Life Care in the Newborn Intensive Care Unit.

Sutton EJ, Gornick M, De Vries, RG, Exe N, Ryan K, Scherer A, Uhlmann W. Information and Deliberation Lead to Shifts in the Public's Preferences for Policies Regarding the Return of Secondary Findings Identified Through Genome Sequencing.

Vercler CJ, Keune J, Wall A. Creating an Ethics of Surgery.

Vercler CJ, Grant S, Amadio J, Labrecque C. Creativity in Surgery: Ethical Dimensions of Innovation and Practice.

CBSSM investigators were also well represented at the 37th Annual Meeting of the Society of Medical Decision Making (SMDM) in St. Louis, MO, October 18-21, 2015. A few highlights:

Fagerlin, A. Plenary: Moving Decision Aids From Research To Real-World Settings. Moderator.

Jimbo M, Sen A, Plegue M, Kelly-Blake K, Rapai M, Zhang M, Hawley ST, Zhang Y, Ruffin M. Determinants Of Patient Intent And Preference Regarding Colorectal Cancer Screening: Baseline Findings From The Dates Study.

Scherer AM, Witteman HO, Fagerlin A, Klasnja P, Tarini BA,

Exe NL, Larkin K, Zikmund-Fisher BJ. Block it out! Presenting test results with clearly defined categories increases understanding of the results.

Scherer AM, Scherer LD, Fagerlin A. The Impact Of The "Illusion Of Explanatory Depth" On Health-Related Decision Making Preferences.

Zahuranec D, Fagerlin A, Sanchez B, Roney M, Fuhrel-Forbis A, Morgenstern L. Variability In Physician Prognosis And Recommendations For Life Sustaining Treatment After Intracerebral Hemorrhage.

Zikmund-Fisher BJ, Scherer AM, Fagerlin A, Klasnja P, Tarini BA, Exe N, Larkin K, Witteman HO. Test Results In Line Graphs Instead Of Tables: Less Confusion without Distortion. Top-rated Abstract.

Selected 2015 Faculty Publications

- Barnes GD**, Kline-Rogers E. Engaging with quality improvement in anticoagulation management. *J Thromb Thrombolysis*. 2015;39:403-409.
- Birkeland AC, **Uhlmann WR**, Brenner JC, **Shuman AG**. Getting personal: Head and neck cancer management in the era of genomic medicine. *Head Neck*. 2015. [Epub ahead of print]
- Burke JF**, Skolarus LE, Freedman VA. Racial disparities in poststroke activity limitations are not due to differences in prestroke activity limitation. *J Stroke Cerebrovasc Dis*. 2015;24:1636-1639.
- Caverly TJ**, Prochazka AV, Combs BP, Lucas BP, Mueller SR, Kutner JS, Binswanger I, **Fagerlin A**, et al. Doctors and numbers: An assessment of the critical risk interpretation test. *Med Decis Making*. 2015;35:512-524.
- De Vries R**. Good Without God: Bioethics and the Sacred. *Society*. 2015;52:438-447.
- De Vries RG**. Bioethics in academic rooms: Hearing other voices, living in other rooms. *The Voices and Rooms of European Bioethics*. 2015:192-206.
- Dwyer-White M, Choate C, **Markel DS**. Increasing health research literacy through outreach and networking: Why translational research should matter to communities. *Health Educ J*. 2015;74:144-155.
- Hamstra DA, Johnson SB, Daignault S, Daignault S, **Zikmund-Fisher BJ**, Taylor JMG, Larkin K, Wood A, **Fagerlin A**. The impact of numeracy on verbatim knowledge of the longitudinal risk for prostate cancer recurrence following radiation therapy. *Med Decis Making*. 2015;35:27-36.
- Hawley ST**. Involving patients in health care: The process matters. *Health Expect*. 2015;18:151-152.
- Hawley ST**, Newman L, Griggs JJ, Kosir MA, Katz SJ. Evaluating a Decision Aid for Improving Decision Making in Patients with Early-stage Breast Cancer. *Patient*. 2015. [Epub ahead of print]
- Hayden EL, **Seagull FJ**, Reddy RM. Developing an educational video on lung lobectomy for the general surgery resident. *J Surg Res*. 2015;196:216-220.
- Holliday E, Griffith KA, **De Castro R**, Stewart A, Ubel P, **Jagsi R**. Gender Differences in Resources and Negotiation Among Highly Motivated Physician-Scientists. *J Gen Intern Med*. 2015;30:401-407.
- House JB, Theyyanni N, **Barnosky AR**, Fuhrel-Forbis A, et al. Understanding ethical dilemmas in the emergency department: Views from medical students' essays. *J Emerg Med*. 2015;48:492-498.
- Jagsi R**, Griffith KA, Kurian AW, Morrow MS, Hamilton AS, Graff JJ, Katz SJ, **Hawley ST**, et al. Concerns about cancer risk and experiences with genetic testing in a diverse population of patients with breast cancer. *J Clin Oncol*. 2015;33:1584-1591.
- Kachalia A, Berg A, **Fagerlin A**, et al. Overuse of testing in preoperative evaluation and syncope a survey of hospitalists. *Ann Intern Med*. 2015;162:100-108.
- Kelly-Blake K**, Clark S, Dontje K, et al. Refining a brief decision aid in stable CAD: cognitive interviews. *BMC Med Inform Decis Mak*. 2014;14:10.
- Kim SYH**, **De Vries R**, Parnami S, Wilson R, **Kim HM**, et al. Are therapeutic motivation and having one's own doctor as researcher sources of therapeutic misconception? *J Med Ethics*. 2015;41:391-397.
- Kim SYH**, Wilson R, **De Vries R**, **Kim HM**, Holloway RG, Kiebertz K. "It is not guaranteed that you will benefit": True but misleading? *Clin Trials*. 2015;12:424-429.
- Kim SYH**, Wilson R, **De Vries R**, **Kim HM**, Holloway RG, Kiebertz K. Could the high prevalence of therapeutic misconception partly be a measurement problem? *IRB*. 2015;37:11-18.
- Lillie SE, **Tarini BA**, Janz NK, **Zikmund-Fisher BJ**. Framing optional genetic testing in the context of mandatory newborn screening tests. *BMC Med Inform Decis Mak*.

(Continued on page 10)

Selected 2015 Faculty Publications (cont.)

2015;15:50.

Martinez KA, **Fagerlin A**, Witteman HO, Holmberg C, **Hawley ST**. What Matters to Women When Making Decisions About Breast Cancer Chemoprevention? *Patient*. 2015. [Epub ahead of print]

Morgenstern LB, **Zahuranec DB**, Sánchez BN, et al. Full medical support for intracerebral hemorrhage. *Neurology*. 2015;84:1739-1744.

Ostergren JE, **Gornick MC**, Carere DA, Kalia SS, **Uhlmann WR**, Ruggin MT, Mountain JL, Green RC, **Scott JS**. How Well Do Customers of Direct-to-Consumer Personal Genomic Testing Services Comprehend Genetic Test Results? Findings from the Impact of Personal Genomics Study for the PGen Study Group. *Public Health Genomics*. 2015;18:216-224.

Ryskina KL, Halpern SD, Minyanou NS, **Goold SD**, Tilburt JC. The role of training environment care intensity in US physician cost consciousness. *Mayo Clin Proc*. 2015;90:313-320.

Scherer AM, Taber-Thomas BC, Tranel D. A neuropsychological investigation of decisional certainty. *Neuropsychologia*. 2015;70:206-213.

Scherer LD, de Vries M, **Zikmund-Fisher BJ**, Witteman HO, **Fagerlin A**. Trust in Deliberation: The Consequences of Deliberative Decision Strate-

gies for Medical Decisions. *Health Psychology*. 2015;34:1090-1099

Siminoff LA, **Sandberg DE**. Promoting shared decision making in disorders of sex development (DSD): Decision aids and support tools. *Horm Metab Res*. 2015;47:335-339.

Sussman JB, Kent DM, Nelson JP, Hayward RA. Improving diabetes prevention with benefit based tailored treatment: Risk based reanalysis of diabetes prevention program. *BMJ (Online)*. 2015;350:h454.

Tait AR, Voepel-Lewis T. Survey research: It's just a few questions, right? *Paediatr Anaesth*. 2015;25:656-662.

Vercler CJ, Buchman SR, Chung KC. Discussing harm-causing errors with patients: An ethics primer for plastic surgeons. *Ann Plast Surg*. 2015;74:140-144.

Witteman HO, Chipenda Dansokho S, **Exe N**, Dupuis A, Provencher T, **Zikmund-Fisher BJ**. Risk Communication, Values Clarification, and Vaccination Decisions. *Risk Anal*. 2015; 35:1801-1819.

Wright Nunes JA, Osborn CY, Ikizler TA, Cavanaugh KL. Health numeracy: Perspectives about using numbers in health management from African American patients receiving dialysis. *Hemodial Int*.



CBSSM Happenings

Baby News

Congratulations to **Christian Vercler** and his wife, Kate on the birth of their daughter, Alice, on April 30, 2015. Ali joins sister, Jackie (age 2).



Congratulations to **Michele Gornick** and her husband Levi on the birth of their daughter, Naomi, on August 5, 2015. Naomi joins sister, Audrey (age 3).



Congratulations to **Darin Zahuranec** and his wife Carla on the birth of their son, Drew, on July 3, 2015. Drew joins Noah (age 7) and Ella (age 5).



Congratulations to **Beth Tarini** and her husband Brady on the birth of their son, Anthony, on October 24, 2015.

Halloween Party



CBSSM People

New Faces at CBSSM

Tolu Olorode, MSW, MUP joined CBSSM in September 2012 as a graduate work study student then transitioned into a full-time Research Area Specialist Associate in August 2015. She received her joint Master's in Social Work and Urban Planning from the University of Michigan. The bulk of her work at CBSSM includes assisting Dr. Susan Goold on an evaluation of the Healthy Michigan Plan (Michigan's Medicaid Expansion). Tolu's other work at the Center includes community-based research aiming to develop and evaluate a software tool to engage minority and underserved communities across Michigan in setting health and health research priorities.



Student Staff at CBSSM

Khadijah Hussain is a sophomore at U of M in the college of LSA and hopes to go to medical school after she graduates. She likes sports and enjoys outdoor activities like biking and camping.

Ayesha Patel is a second year graduate student in SPH. She is currently working on patient provider communication with Dr. Julie Wright.

Staff & Post Doc News

Meghan Roney has accepted a new research position with KDH Research and Communication in Atlanta, GA. We wish Meghan best of luck in her new endeavors!

Erin Sears is our new Wellness Champion, promoting the health and well-being for CBSSM and General Medicine.

Sandra Moing has accepted a new position as Executive Secretary at the LS&A Biophysics Department. Congratulations!

Congratulations to **Rochelle (De Castro) Jones** on her recent marriage to Ian Jones on May 15, 2015.

Kerry Ryan has recently celebrated her fifth year at CBSSM. **Erin Sears** celebrated 1 year at CBSSM.

Cengiz Salman also celebrated 1 year at CBSSM. Congratulations!

Lisa Szymecko presented at the Western Michigan University's Medical Humanities Workgroup Conference.

Aaron Scherer and **Megan Knaus** traveled to Stockholm, Sweden with **Angie Fagerlin** to present findings to their partners in the European Union for their project, Effective Communication in Outbreak Management.



Join CBSSM's email list or update you email subscription on the [CBSSM Website](#).

You can also connect with CBSSM on [Twitter](#), [LinkedIn](#) and on [Facebook](#)!

**Center for Bioethics and
Social Sciences in Medicine**
cbssm.med.umich.edu
2800 Plymouth Road
Building 16, 4th floor
Ann Arbor, MI 48109-2800