



# CENTER FOR BIOETHICS AND SOCIAL SCIENCES IN MEDICINE

## FALL/WINTER 2016 NEWSLETTER

Raymond De Vries, PhD  
*Co-Director*

Brian Zikmund-Fisher, PhD  
*Interim Co-Director*

Valerie Kahn, MPH  
*Manager*

Amy Lynn  
*Sr. Administrative Assistant*

Kerry Ryan, MA  
*Public Relations and Events*

### ***In this issue:***

#### Research Spotlight:

Michele Gornick.....	2
CBSSM Events.....	3-5
Postdoc Fellowship.....	6
Faculty Highlights.....	7
Faculty Publications.....	7-8
Faculty Presentations & Grants.....	9
CBSSM People.....	10

CBSSM  
2800 Plymouth Rd  
Building 14, G016  
Ann Arbor, MI 48109-2800  
734.615.8377  
[www.cbssm.med.umich.edu](http://www.cbssm.med.umich.edu)

*CBSSM is supported by the Dean's Office at the University of Michigan Medical School, the Department of Internal Medicine, and the Ann Arbor Veterans Administration Medical Center (Center for Clinical Management Research).*

## Greetings from the Co-Directors

At CBSSM we continue to be on the cutting edge of research and practice in decision science and bioethics. Most recently we co-sponsored a one-day symposium examining the ethical, legal and social Implications of Learning Health Systems here in Ann Arbor. Together with an impressive list of speakers, more than 150 attendees began a conversation about how to harness the power of health data while ensuring that the wishes and rights of those who donate that information are respected in the ways it is collected, stored, and used (page 3).

And keep your eyes open for the next edition of *Medicine at Michigan*, where the column "Gray Matters" focuses on an NIH-funded research project conducted by members of CBSSM. We discuss the problem of gaining proper consent for the use of donations to a biobank, when, in fact, biobanks do not know and cannot predict how those donations will be used in future research. CBSSM researchers, together with colleagues from Michigan State University's Center for Ethics & Humanities in the Life Sciences collected data from a survey of a representative sample of the US population and from participants in three

"democratic deliberations" in order to help policymakers respond to this thorny problem.

We also look forward to our 2017 CBSSM Research Colloquium, in which Norman Daniels, PhD will present the keynote Bishop Lecture in Bioethics, as well as our upcoming free screening and panel discussion of the film, "Concussion" (page 4). We also continue to sponsor our bi-monthly Seminar series, the Bioethics Grand Rounds, and the PIHCD working group (page 5).

In this newsletter, we spotlight Michele Gornick, PhD and her work related to public policy preferences and patient and clinician communication about genome sequencing results (page 2). We also provide highlights from faculty news and press coverage (page 7), publications (pages 7-8), presentations and grants (page 9), as well as other CBSSM news (pages 10). In addition, we are seeking postdoctoral fellowship applicants for the 2017-2018 academic year (page 6).

## Research Spotlight: Michele Gornick, PhD

Michele C. Gornick, PhD is a Research Investigator at the UM Department of Internal Medicine, Division of General Medicine. Her research involves numerous multidisciplinary projects evaluating communication, social, ethical, and policy issues associated with the integration of a precision medicine approach to disease treatment and prevention.

Dr. Gornick's current research has grown out of her collaboration on the Michigan Oncology Sequencing (MI-ONCOSEQ) project at the University of Michigan Comprehensive Cancer Center (UMCCC). MI-ONCOSEQ is an NCI/NHGRI funded grant exploring best practices for integrating genome-sequencing information into clinical practice. This project is part of the NHGRI initiated Clinical Sequencing Exploratory Research (CSER) consortium supporting the integration of genomic sequencing into the clinic.

She recently led a study using deliberative democratic (DD) methods to solicit the public's attitudes and preferences for different policy options for the disclosure of whole genome sequencing results. Healthy participants and cancer patients were recruited to attend an all-day deliberative/educational session and complete a series of three surveys (pre-session, post-session and 1 month follow-up). This study found that education and deliberation enhanced public appreciation of the scientific and ethical complexities of genomic sequencing and the potential risks of receiving secondary results from clinical sequencing. These findings were presented as part of a platform session at the 2015 American College of Medical Genetics and Genomics (ACMG) annual meeting and as an oral paper presentation at the 2015 American Society of Bioethics and Humanities (ASBH) annual meeting. A summary of the quantitative findings from this study were recently published in the *Journal of Genetic Counseling* and a qualitative companion manuscript is currently under review.

Dr. Gornick's continued collaboration on the MI-ONCOSEQ project has also led to a Michigan Institute for Clinical & Health Research (MICHCR) Postdoctoral Translational Scholars Program (PTSP) multidisciplinary career development award. Her work funded through this award assesses critical barriers clinicians face integrating complex and often ambiguous genomic information into patient care. Based on clinic observations and interviews with oncologists, Dr. Gornick collaborated with the Center for Health Communications Research (CHCR) to develop and evaluate a prototype test report for cancer-related genomic sequencing findings. Currently, she is fielding a survey of Michigan oncologists to test whether the prototype report improves understanding and implementation of genomic sequencing information.



**Michele Gornick, PhD**

### Publication highlights:

*Gornick MC, Scherer AM, Sutton EJ, Ryan KA, Exe NL, Li M, Uhlmann, WR, Kim SY, Roberts JS, De Vries RG. Effect of Public Deliberation on Attitudes toward Return of Secondary Results in Genomic Sequencing. J Genet Couns. 2016.*

*Ostergren JE, Gornick MC, Carere DA, Kalia SS, Uhlmann WR, Ruffin MT, Mountain JL, Green RC, Roberts JS. How Well Do Customers of Direct-to-Consumer Personal Genomic Testing Services Comprehend Genetic Test Results? Findings from the Impact of Personal Genomics Study. Public Health Genomics. 2015; 18:216-224*

*Gornick MC, Ryan KA, Kim SY. Impact of non-welfare interests on willingness to donate to biobanks: an experimental survey. J Empir Res Hum Res Ethics. 2015; 9:22-33.*

## 2016 CBSSM Event Highlights

### Bioethics Grand Rounds: When Death Comes Callin'



At our October Bioethics Grand Rounds, we had the wonderful opportunity to do something a bit different. This BGR involved a musical program of songs and readings reflecting various perspectives on death and dying. Performers included Charlotte De Vries, Jeanne Mackey, Merilynne Rush and friends.

### LHS-ELSI Symposium



CBSSM was a co-sponsor of the Ethical, Legal and Social Implications of Learning Health Systems Symposium On November 18, 2016. The goal of this symposium was to promote dialogue and contribute to a research agenda on how learning health system organizers should engage the ethical, legal and social implications of this work. CBSSM faculty, **Raymond De Vries**, **Jody Platt**, **Andrew Shuman**, **Dorene Markel**, **Scott Roberts**, and **Kayte Spector-Bagdady** were moderators and discussants at the symposium. Together with an impressive list of speakers, more than 150 attendees began a conversation about how

to harness the power of health data while ensuring that the wishes and rights of those who donate that information are respected in the ways it is collected, stored, and used. The Brehm Center, the Michigan Institute for Clinical and Health Research (MICHHR), the School of Public Health, and Healthcare Information and Management Systems Society (HIMSS) were also co-sponsors. For more information: <http://lhs.medicine.umich.edu/lks/events/201611/elsi-symposium>

We also had the opportunity to have a CBSSM reunion with our former co-director, Scott Kim, who presented at the symposium.

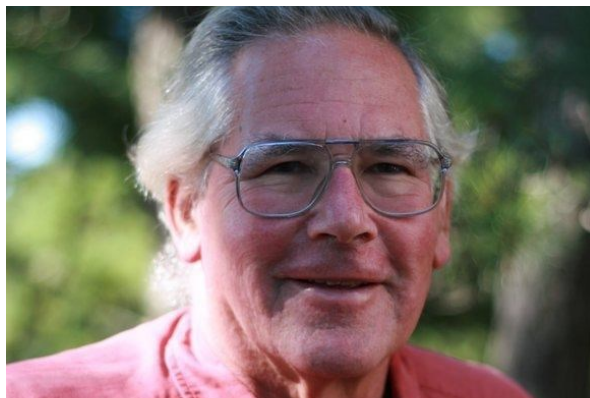


## Upcoming CBSSM Events

### 2017 Research Colloquium & Bishop Lecture

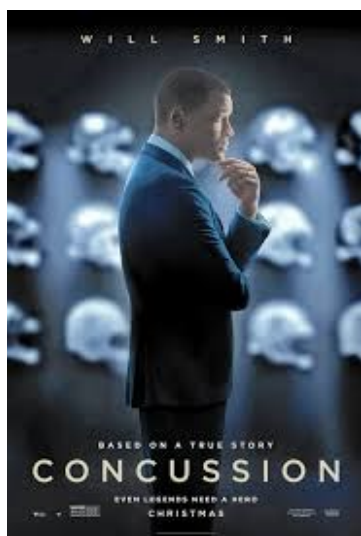
The CBSSM Research Colloquium will be held Tuesday, **April 25, 2017** at the Great Lakes Room, Palmer Commons, 100 Washtenaw Ave, Ann Arbor, MI. The CBSSM Research Colloquium features the Bishop Lecture in Bioethics as the keynote address. **Norman Daniels, PhD** will present the Bishop Lecture.

Dr. Daniels is Mary B. Saltonstall Professor of Population Ethics and Professor of Ethics and Population Health in the Department of Global Health and Population at the Harvard School of Public Health. Formerly chair of the Philosophy Department at Tufts University, his most recent books include *Identified versus Statistical Lives* (Oxford 2015); *Just Health: Meeting Health Needs Fairly* (Cambridge, 2008); *Setting Limits Fairly: Learning to Share Resources for Health*, 2<sup>nd</sup> edition (Oxford, 2008); *From Chance to Choice: Genetics and Justice* (2000); and *Is Inequality Bad for Our Health?* (2000). He has published 200 peer-reviewed articles and as many book chapters, editorials, and book reviews. His research is on justice and health policy, including priority setting in health systems, fairness and health systems reform, health inequalities, and intergenerational justice. A member of the IOM, a Fellow of the Hastings Center, and formerly on the ethics advisory boards of the CDC and the CIHR, he directs the Ethics concentration of the Health Policy PhD at Harvard and recently won the Everett Mendelsohn Award for mentoring graduate students.



The CBSSM Research Colloquium and Bishop Lecture in Bioethics is co-sponsored by CBSSM & the Bishop Lectureship in Bioethics Fund.

A call for presentation abstracts will be sent out in early 2017.



### Free Film Screening: "Concussion"

On March 30th, at 7 pm in Forum Hall, Palmer Commons, CBSSM will be sponsoring a film screening of the film "Concussion" to be followed by a discussion moderated by Co-Director, **Raymond De Vries, PhD**. More details about panelists is forthcoming. Refreshments will be provided.



---

## Upcoming CBSSM Events (cont.)

---

### CBSSM Seminars

---

Twice-monthly seminars are sponsored by CBSSM on a variety of topics. Seminars are generally scheduled on Wednesdays or Thursdays, at 3:00-4:00 pm located in 266C, NCRC Building 16, unless otherwise noted.

Upcoming 2016-2017 seminars:

- ◆ December 15: Susan Goold, MD, MHSA, MA & Zachary Rowe
- ◆ January 12: Social Media Seminar
- ◆ January 18: Dina Hafez Griauzde, MD
- ◆ February 2: Julie Wright Nunes, MD, MPH
- ◆ February 22: Martina T. Caldwell, MD
- ◆ March 9: Tammy Chang, MD, MPH, MS
- ◆ April 13: Sarah Hawley, PhD, MPH
- ◆ May 11: Healthy Michigan Project
- ◆ May 17: TBD

See <http://cbssm.med.umich.edu/news-events/events/cbssm-seminars> for further updates. You can add yourself to the CBSSM seminar list from the CBSSM website home page.

Join CBSSM's email list or update your email subscription on the **CBSSM Website**.

You can also connect with CBSSM on **Twitter**, **LinkedIn** and on **Facebook**!

### Bioethics Grand Rounds

---

CBSSM's Clinical Ethics Program sponsors the monthly Bioethics Grand Rounds. Bioethics Grand Rounds is a monthly presentation and discussion of medical ethics. CME credit is available for UMHS faculty and staff.

Upcoming Bioethics Ground Rounds:

- ◆ December 14: Andrew Shuman, Christian Vercler, & Ed Goldman
- ◆ January 25: Meredith Walton
- ◆ February 22: Devan Stahl, PhD
- ◆ March 22: Autumn Fiester, PhD
- ◆ April 26: Nicholson Price, JD, PhD
- ◆ May 24: Scott Grant, MD, MBE

---

### PIHCD Working Group

---

The PIHCD Working Group provides a forum for project-focused interdisciplinary collaborations in topics related to bioethics, health communication, decision making and other topics that fit within the 5 domains of CBSSM.

PIHCD meetings provide an opportunity for investigators to receive feedback on research proposals, paper drafts, grant applications, or projects at any stage of development.

**PIHCD** usually meets on Wednesdays or Thursdays at 4 pm in B004E.

To be added to the PIHCD email list, contact Amy Lynn at [lynnam@umich.edu](mailto:lynnam@umich.edu) OR join the email list through the CBSSM website:

<http://cbssm.med.umich.edu>

## CBSSM Postdoctoral Fellowship Program

CBSSM is currently soliciting applications from qualified individuals for a postdoctoral research fellow position for the 2017-2018 academic year:

### Bioethics Postdoctoral Research Fellow

Active projects in bioethics at CBSSM currently include the ethical, legal, and social implications of genomic medicine, informed consent and therapeutic misconception, surrogate decision-making, decision-making capacity for treatment and research, deliberative democratic methods in bioethics, resource allocation, and the sociology of medical ethics/bioethics, among others. Candidates' area of focus must be in bioethics, although their backgrounds may be in social or natural sciences, humanities, medicine, or law.

### Decision Sciences Postdoctoral Research Fellow

This fellowship focuses on understanding and improving the health care communication and decisions made by both patients and providers. Past postdoctoral fellows have included scholars whose research in health care communication and decision-making has been approached using theories drawn from social cognition, motivation and emotion, risk communication, human factors, ethics, and economics.

CBSSM has five broad programs that serve its research mission and fellows will usually focus on one of these areas.

- ◆ Program in Clinical and Research Ethics
- ◆ Program in Health Communication and Decision-Making
- ◆ Program in Medicine and Society
- ◆ Program in Health, Justice and Community
- ◆ Program in Genomics, Health and Society

Postdoctoral fellows are expected to collaborate on established projects and are encouraged to conduct independent research with an emphasis on study inception, manuscript writing, and applying for grants. CBSSM's resources and collaborative support enable fellows to build their own research programs.

Salary is competitive and commensurate with experience and education. The postdoctoral research fellowship is an annual appointment, with the possibility of renewal for one additional year contingent upon satisfactory performance and the availability of funding.

All requirements of the PhD or equivalent terminal degree must be completed before the postdoctoral research fellow appointment can begin. Candidates should submit a cover letter, including a detailed statement of research interests, a CV, and a writing sample by **January 13, 2017**. All application materials should be submitted electronically through our online application. In addition, semi-finalists will be asked to submit three letters of recommendation.

For more information or to apply: <http://cbssm.med.umich.edu/training-mentoring/post-doctoral-fellowship>

## Selected CBSSM Faculty Highlights

CBSSM welcomes faculty involvement across the University. Faculty affiliated with CBSSM come not only from the Medical School but also from the School of Public Health, the School of Public Policy, the Law School, and the College of Literature, Science and the Arts.

The new, enhanced UMHS Ethics committee was featured in the Office of Clinical Affairs "Chief Brief." **Andrew Shuman** and **Christian Vercler** are the co-directors of the Program in Clinical Ethics.

**Kayte Spector-Bagdady** was awarded the 2016 Rackham Graduate School Outstanding Postdoctoral Fellow Award.

**Raymond De Vries** and Tom Tomlinson (MSU) published an article in *The Conversation* about the ethical concerns of individuals donating to biobanks.

**Andrew Shuman**, **Raymond De Vries**, **Christian Vercler**, and **Janice Firn** were awarded a CME Innovation Grant to develop an ethics curriculum for clinicians across UMHS critical care units.

**Brian Zikmund-Fisher** and former CBSSM postdoctoral fellow, Laura Scherer, published an article in *The Conversation* on how stories of vaccine-related harms undermine trust, even when people don't believe them.

**Jeff Kullgren**'s research on improving patient and provider decision making using insights from behavioral economics was highlighted in the fall issue of *Medicine at Michigan*.

Postdoctoral Fellow, **Kayte Spector-Bagdady**, accepted a position as Research Investigator in the Department of Obstetrics and Gynecology.

**Reshma Jagsi**'s JAMA article, "Sexual Harassment and Discrimination Experiences of Academic Medical Faculty" was featured in the *Huffington Post*, *Fox News Health*, and other media outlets.

**Brian Zikmund-Fisher**'s piece, "Why public health worries don't have to ruin your cookie dough" was published in *The Conversation*.

**Joel Howell** was quoted in the *New York Times* article, "How an Aesthete's Eye Can Help a Doctor's Hand."

**Kayte Spector-Bagdady**'s article on lessons for radiologists from the genomics community on incidental results was profiled by the *Wall Street Journal*. Stella Kang, MD, MS was the lead author.

**Michael Fetters** was named a 2016 Fulbright Distinguished Chair in Social Sciences.

The August 2016 *AMA Journal of Ethics* featured commentaries by **Christian Vercler**, **Lauren Smith**, and **Andrew Shuman**.

## Selected 2016 Faculty Publications

Birkeland AC, **Uhlmann WR**, Brenner JC, **Shuman AG**. Getting personal: Head and neck cancer management in the era of genomic medicine. *Head Neck*. 2016;38:E2250-E8.

**Burke JF**, Kerr EA, McCammon RJ, Holleman R, **Langa KM**, Callaghan BC. Neuroimaging overuse is more common in Medicare compared with the VA. *Neurology*. 2016;87:792-8.

**Burke JF**, McDermott M. Pursuing "model care" of transient ischemic attacks. *Neurology*. 2016;86:888-9.

Carere DA, Kraft P, Kaphingst KA, **Roberts JS**, Green RC. Consumers report lower confidence in their genetics knowledge following direct-to-consumer personal genomic testing. *Genet Med*. 2016;18:65-72.

**Caverly TJ**, Hayward RA, Reamer E, **Zikmund-Fisher BJ**, Connochie D, Heisler M, Fagerlin AF. Presentation of Benefits and Harms in US Cancer Screening and Prevention Guidelines: Systematic Review. *J Natl Cancer Inst*. 2016;108:djv436.

(Continued on page 8)

## Selected 2016 Faculty Publications (cont.)

**Caverly TJ**, Matlock DD, Prochazka AV, Lucas BP, Hayward RA. Interpreting Clinical Trial Outcomes for Optimal Patient Care: A Survey of Clinicians and Trainees. *J Grad Med Educ.* 2016;8:57-62.

**Fetters MD**. "Haven't We Always Been Doing Mixed Methods Research?": Lessons Learned From the Development of the Horseless Carriage. *J Mix Methods Res.* 2016;10:3-11.

**Fetters MD**, Molina-Azorin JF. The Future of Mixed Methods Task Force Report: A Call for Commentary. *J Mix Methods Res.* 2016;10:220.

**Gornick MC**, Scherer AM, Sutton EJ, Ryan KA, Exe NL, Li M, **Uhlmann WR**, Kim SYH, **Roberts JS**, **De Vries RD**. Effect of Public Deliberation on Attitudes toward Return of Secondary Results in Genomic Sequencing. *J Genet Couns.* 2016. [Epub ahead of print]

**Harris LH**, Silverman NS, Marshall MF. The Paradigm of the Paradox: Women, Pregnant Women, and the Unequal Burdens of the Zika Virus Pandemic. *Am J Bioeth.* 2016;16:1-4.

**Hawley ST**, Morris AM. Cultural challenges to engaging patients in shared decision making. *Patient Educ Couns.* 2016. [Epub ahead of print]

**Jagsi R**, Griffith KA, Jones R, Perumalswami CR, Ubel P, Stewart A. Sexual harassment and discrimination experiences of academic medical faculty. *JAMA.* 2016;315:2120-1.

**Kim HM**, Zivin K, Choe HM, Stano CM, Ganoczy D, Walters H, et al. Predictors of start of different antidepressants in patient charts among patients with depression. *J Manag Care Spec Pharm.* 2015;21:424-30.

Kim SYH, Wilson R, **De Vries R**, Ryan KA, Holloway RG, Kiebertz K. Are patients with amyotrophic lateral sclerosis at risk of a therapeutic misconception? *J Med Ethics.* 2016;42:514-8.

**Kukora S**, **Laventhal N**. Choosing wisely: should past medical decisions impact the allocation of scarce ECMO resources? *Acta Paediatr.* 2016;105:876-8.

**Kullgren JT**, Troxel AB, Loewenstein G, Norton LA, Gatto D, Tao Y, et al. A Randomized Controlled Trial of Employer Matching of Employees' Monetary Contributions to Deposit Contracts to Promote Weight Loss. *Am J Health Promot.* 2016;30:441-52.

**Kullgren JT**, Williams GC, Resnicow K, An LC, Rothberg A, Volpp KG, et al. The promise of tailoring incentives for healthy behaviors. *Int J Workplace Health Manag.* 2016;9:2-16.

Martinez KA, Fagerlin A, Witteman HO, Holmberg C, **Hawley ST**. What Matters to Women When Making Decisions About Breast Cancer Chemoprevention? *Patient.* 2016;9:149-59.

Meurer WJ, Levine DA, Kerber KA, **Zahuranec DB**, **Burke J**, Baek J, Sánchez B, Smith MA, **Morgenstern LB**, Lisabeth LD. Neighborhood Influences on Emergency Medical Services Use for Acute Stroke: A Population-Based Cross-sectional Study. *Ann Emerg Med.* 2016;67:341-8.

**Platt J**, Thiel DB, Kardias SLR, Choi SW. Innovating consent for pediatric HCT patients. *Bone Marrow Transplant.* 2016;51(6):885-8.

Scherer LD, **Caverly TJ**, **Burke J**, **Zikmund-Fisher BJ**, **Kullgren JT**, Steinley D, McCarthy DM, Roney M, Fagerlin A. Development of the Medical Maximizer-Minimizer Scale. *Health Psychol.* 2016;35:1276-87.

Scherer LD, Shaffer VA, Patel N, **Zikmund-Fisher BJ**. Can the vaccine adverse event reporting system be used to increase vaccine acceptance and trust? *Vaccine.* 2016;34:2424-9.

**Shuman AG**. Ethics of Placebo Control in Trials for Idiopathic Sudden Sensorineural Hearing Loss: Counterpoint. *Otolaryngol Head Neck Surg.* 2016;155:13-4.

**Zikmund-Fisher BJ**, **Kullgren JT**, Fagerlin A, Klamerus ML, Bernstein SJ, Kerr EA. Perceived Barriers to Implementing Individual Choosing Wisely® Recommendations in Two National Surveys of Primary Care Providers. *J Gen Intern Med.* 2016:1-8. [Epub ahead of print]

## Selected Recent CBSSM Faculty Presentations

*Highlights from the 18th Annual Meeting of the American Society of Bioethics and Humanities (ASBH) in Washington, DC October 6-9, 2016:*

**Smith L, Vercler C, Shuman A,** Shinar Y. Creating a Cocurricular Ethics Program for Medical Students.

**Laventhal N,** Kraft K, **Vercler C.** Roman Charity Redux: The Moral Obligation of the Breastfeeding Physician.

**Vercler C.** Picture this! Standing the Patient Behind the Camera.

**Spector-Bagdady K.** Public Versus Private Biobanks—What's the Notice of Proposed Rulemaking (NPRM) Got to Do with it?

**Kukora S, Lavalenth N.** Information Transfer Versus Values Exploration: Are Neonatologists Answering the Wrong Questions?

**Goold S,** Rowe Z, **Szymecko L.** Evaluating Health Policy: Bringing Outsiders In.

**Spector-Bagdady K, Firn J, Laventahl N,** Hauschildt K. Unintended Consequences of Clinical Ethics Consultation: Self-Reflection in the Age of Professionalization.

Ryan K, Tomlinson T, **De Vries R, Kim HM, Krenz C,** Kim S. The Effect of Public Deliberation on Attitudes Toward Donating to Biobank Research and Biobank Consent Policies.

*Highlights from the 38th Annual Meeting of the Society of Medical Decision Making (SMDM) in Vancouver, BC, October 23-26, 2016:*

**Zikmund-Fisher B,** Scherer A, Witterman H, **Solomon J,** Exe N, Fagerlin A. Providing Harm Anchors In Visual Displays Of Test Results Mitigates Patient Concern About Nearly Normal Values.

Scherer L, **Caverly T, Kullgren J,** Scherer A, Fagerlin A, **Zikmund-Fisher B.** The Influence Of Data Versus Narratives On Prostate Specific Antigen Screening Decisions.

**Zahuranec D, Anspach R,** Roney M, Fuhrel-Forbis A, Thompson B, Varelas P, **Morgenstern L,** Fagerlin A. Perspectives Of Surrogate Decision Makers On Prognosis After Brain Hemorrhage.

Fagerlin A, Knaus M, **Zikmund-Fisher B,** Das E, Scherer A. Motivating Concern About Pandemic Influenza: Effects Of Graphics And Disease Terms In A 11-Country Study.

Han P, **Zikmund-Fisher B,** Scherer A, Knaus M, Duarte C, Fagerlin A. Communicating Ambiguity About Vaccine Effectiveness Reduces Vaccination Intentions: Ambiguity Aversion And Its Mechanisms.

## Selected New Grants 2015-2016

**Harris, LH (PI).** Identifying Learning Outcomes for a Reproductive Justice Curriculum for Physicians. Sponsor: Society of Family Planning.

**Hawley S (PI).** Decision Making about Contralateral Prophylactic Mastectomy: A Pilot Study. Sponsor: UNC Chapel Hill

**Hawley S (PI).** A Post-Visit Patient Portal Tool to Promote Colorectal Cancer Screening. Prime Sponsor: NIH

**Jagsi R (PI).** Patient Perspective on Ethical Implementation of Oncology Learning System. Sponsor: NIH

**Jagsi R (PI).** Race, Gender, and the Experiences of Chairs of Academic Radiation Oncology Departments. Sponsor: American Society for Therapeutic Radiation Oncology

**Kullgren JT (PI).** Provider, Patient, and Health System Effects of Provider Commitments to Choose Wisely. Sponsor: Donaghue Foundation

**Kullgren JT (PI).** A National Survey of Value-Promoting Consumer Behaviors in High-Deductible Health Plans. Robert Wood Johnson Foundation

**Tait A (PI).** Toward a Consensus Operational Definition of Child Assent for Research. Sponsor: Greenwall Foundation

**Zahuranec D (PI).** Outcomes Among Surrogate Decision Makers in Stroke. Sponsor: NIH

**Zikmund-Fisher B (PI).** Collaborative Research: Testing Cognitive and Affective Interventions to Improve Public Understanding and Affective Reactions to Pandemic Risks. Sponsor: NSF

## CBSSM People

### Staff News

**Lisa Szymecko** traveled to England to present at the 2016 International Society on Priorities in Health Care. **Susan Goold** and Karen Calhoun also presented.

**Kerry Ryan**, **Nicole Exe**, and **Valerie Kahn** represented CBSSM at the Researchpalooza to highlight our work to faculty, staff, and students.

**Lisa Szymecko** presented at the WMU Medical Humanities Conference in Kalamazoo, MI.

**Kerry Ryan** presented at the 2016 ASBH Conference in Washington, DC.

**Nicole Exe** accepted a new position as a Training Specialist in the Education and Mentoring Group at MICHR. Congratulations!

### Our Student Staff

**Khadijah Hussain** is a junior in the college of LSA studying Biomolecular Science and hopes to attend medical school after she graduates. She loves to travel, and in her free time she enjoys watching and playing sports as well as spending time outdoors biking and camping.

**Ayesha Patel** is a second year MHSA candidate at the School of Public Health. Her primary interests include quality and healthcare strategy. After graduation, she plans to move to Chicago to work with Accenture on Digital Health and Telehealth development. In her free time she likes to dance, hike, and try new sweets.

**Elise Caruso** is a second year MPH student in the Health Behavior and Health Education department at the School of Public Health. Main focuses of her work include qualitative research methods and health communication. Outside of school she enjoys doing yoga, reading, and exploring new places.

### Halloween Party



Another great Gen Med Halloween Party!



### Baby News

Congratulations to **Geoff Barnes** and **Grant Gorman**, on the birth of their daughter, Gillian, on July 7, 2016.

